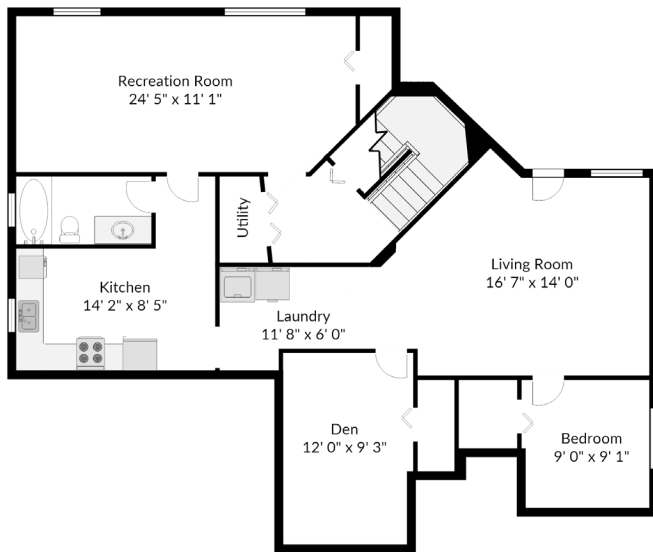


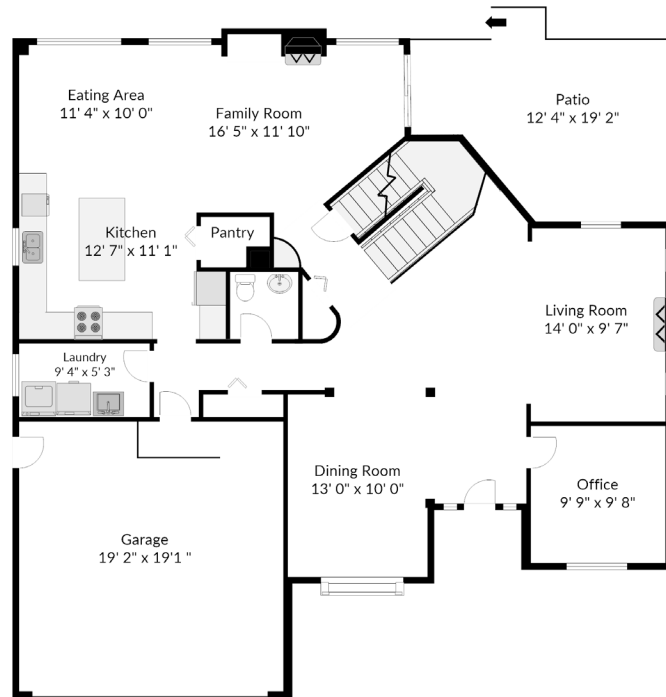
16709 63B Ave, Surrey, BC

Finished 3877 sq. ft.

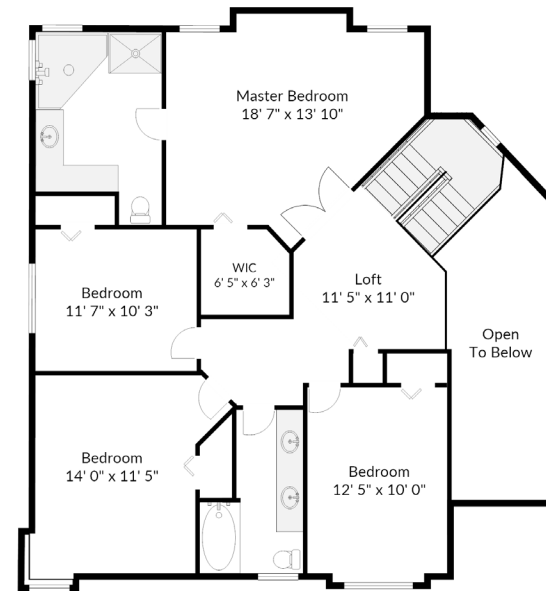
Garage 388 sq. ft.



Basement  
1370 sq. ft.



Main Level  
1375 sq. ft.



Upper Level  
1132 sq. ft.

Measurements and floor plan are approximate and are to be used for advertising purposes only. Not suitable for construction or architectural use. E&O Insured. Square footage calculated using ANSI Z765 method. Measured October 2017.